

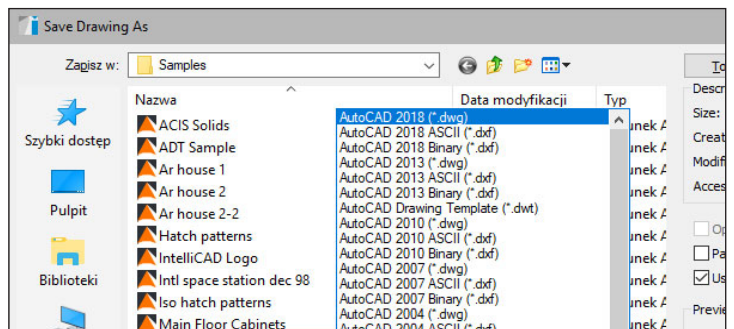
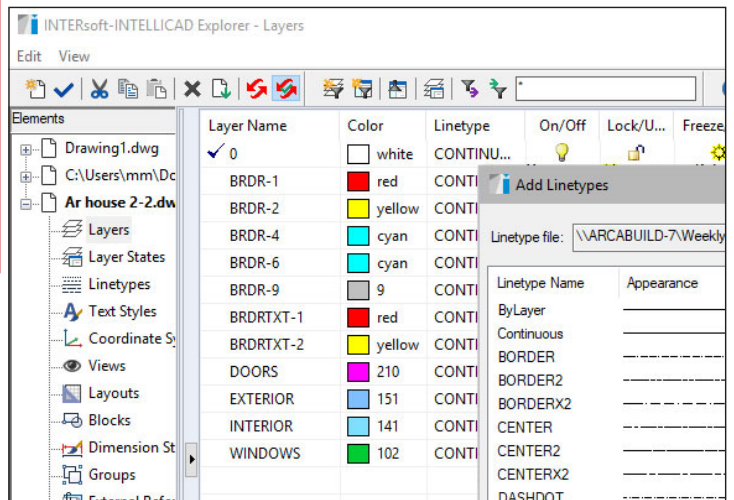
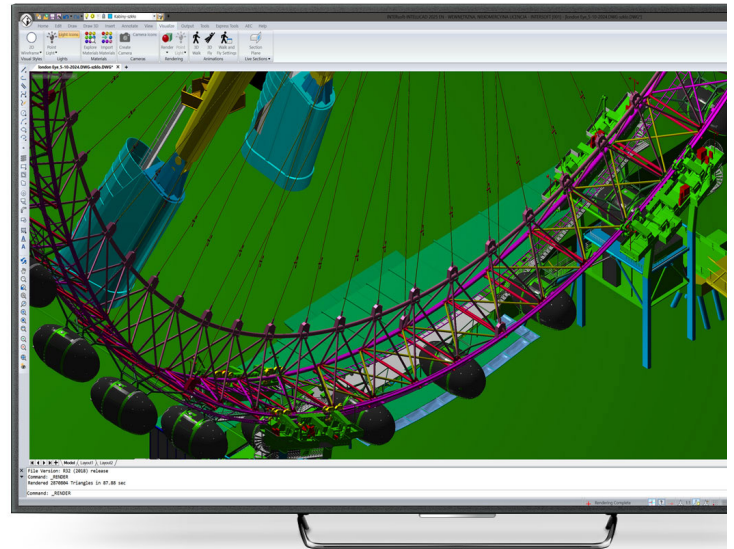
## INTERsoft-INTELLICAD

Breakthrough version of the CAD software for creating 2D/3D technical documentation in the .DWG format.

**Powerful tool for precise drawing. The new graphics interface ensures intuitive work and does not interfere in the CAD designer's habits.**

### What's new in INTERsoft-INTELLICAD 2025?

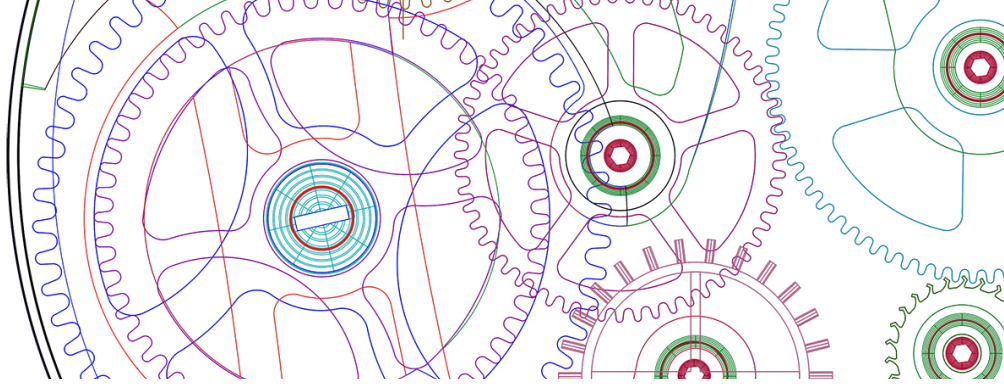
- Improved performance when using an OpenGL ES graphics device and panning and zooming drawings containing 3D solids.
- Selecting IFC4 or IFC4x3 format when exporting to .ifc files (change in the export window).
- Setting the display properties of AEC object styles.
- Dynamic block editor (parameters, actions and visibility states) - complete sets of editing functions.
- Single attribute editor: value, text settings and properties of each attribute in relation to a block.
- Expanded list of recently used files to 50 files.
- Dragging a .dwg file from Windows File Explorer and other places to the tool palette to add it as a block on the tool palette.
- Right-clicking on the top tab of the drawing file allows you to set how the windows are displayed.
- Clicking on the border of two viewports in the model area allows you to move it and change the proportions of adjacent viewports.
- The PSPACEMARGINS variable allows you to turn on and off the display of the print area border, which is visible as a dashed line in the paper area.
- Load and save print stamp settings files (.pss).
- Print preview for .pc3 printers.



### Main features:

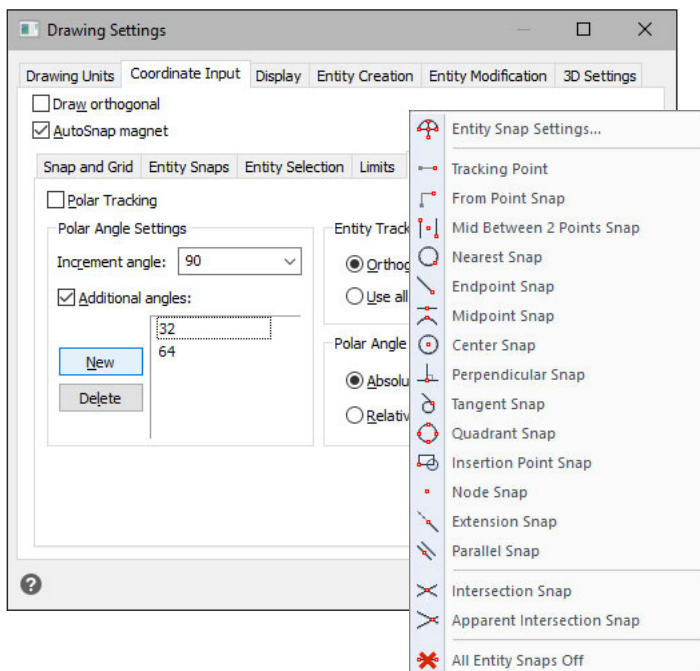
- Dynamic coordinate input and a setup window for dynamic input.
- Editing tool palettes, creating block palettes and block editor.
- Recurring selection and deleting duplicates (overkill).
- Import and export of system variable settings from the System Variable Manager level.
- Reading and saving drawings in AutoCAD format from 2.5 to 2018 (DWG, DXF).
- Working in DWG 2018 native format.
- Possibility to work on several computers (under one license), using a simple transfer of the license file.
- A smart list of the most often used commands (Smart TOP 10) that are automatically memorized when working on a project, creating a personalized tool palette.
- Using DWT templates.
- The function of fixing and checking damaged files.
- The program window is divided into tabs in which the drawings are successively displayed.
- Command line and input.
- Working on layers.
- Project management explorer.
- Working in Cartesian and polar coordinates.
- Dockable tool palettes.
- Dedicated toolbar of Express tools.
- Possibility to create a non-rectangular viewport in the paper space.

- Implemented interpreter of the Lisp programming language.
- Possibility to load SDS and IRX overlays.



## Drawing features:

- Tools for creating 2D and 3D drawings.
- Possibility to fully modify and edit the properties of all drawn elements
- New editable Quick Properties window.
- Preview modifications when using the Offset, Trim, and Extend commands.
- Dimensioning and text styles with the ability to import.
- Entering and defining symbol libraries, blocks, simple and complex texts (SHX and TrueType fonts). Additional multiline text editor.
- Exploding attributes to text and exploding texts.
- Dimensioning assigned to the element: linear and angular, the ability to define your own styles.
- Automatic field and distance measurement, setting coordinates.
- Combined command: Move / Copy / Rotate / Scale.
- Construction lines.
- Handles, attributes, hatches.
- A wide range of hatch patterns. New hatch definition and gradient fill window.
- Preview modifications when editing hatches.
- Inserting and editing tables.
- A multiline drawing option.
- Enhanced block, reference and dimension support capabilities: block conversion to reference, copying embedded objects (blocks, references and underlays), block/reference property list.
- Relative paths support for raster images and external links.
- Options: Select similar (with adding to the selection and by the settings window), Multiadogy, Multiline editor, Dashed line.
- Displaying properties of the many selected elements in the form of a tree.
- Possibility to add point cloud in RCP / RCS format.
- New types of 3D objects (primitives) - Facet Modeler (ODA surface modeler), along with basic editing functions - intended for use in 3D, when the mass of the element is not significant.
- Possibility of photorealistic visualization and rendering.
- Drawing in hidden line mode and shading in real time.
- Inserting and editing AEC architectural elements: walls, windows, openings, doors, ceilings and flat roofs.
- New AEC Styles Manager window for managing elements.
- Saving and displaying mechanical elements (Teigha Mechanical API).
- Displaying ADT and Civil 3D objects.
- Possibility to open ACIS solids (without the option to create and fully edit).

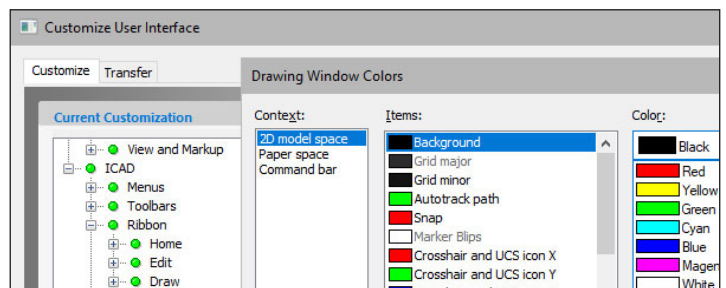
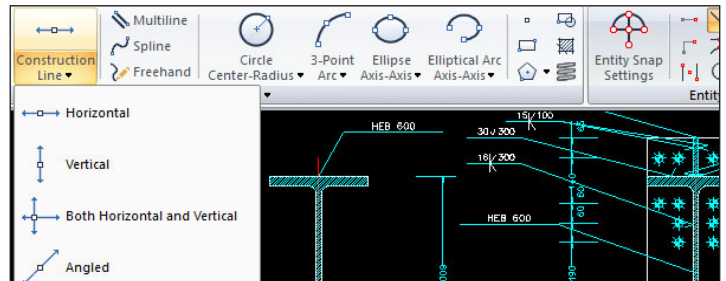


## Precision drawing tools:

- Auxiliary grid, orthogonal drawing functions, polar tracking.
- Extended recognition of snap points (ESNAP), e.g. for lines - center, end points and intersections of lines.
- Setting the snapping of characteristic points to underlays.
- Possibility to use a set of commands for construction lines.
- Expanded visualization - zoom, regeneration and panning of the drawing, dynamic rotation of 3D objects and a new function of camera settings in the view.

## IMPORT/EXPORT

- Importing and editing raster images (e.g. geodesic underlay), including files such as: JPG, TIF, BMP, GIF, PNG
- Import and export PDF file.
- Cooperating with BIM applications by loading spatial 3D models from Revit in RVT and RFA format as underlays in CAD projects (64-bit version only).
- Cooperation with BIM applications by loading spatial 3D models in the IFC format as underlays in CAD projects (64-bit version only).
- Support of DWF, DGN and DAE formats.
- Export of STL files.
- Possibility of adding point cloud in RCP/RCS format.
- Creating a project package and use of the eTransmit saving tool.



## Full program personalization:

- Modification of the top menu, ribbons (panels and tabs), toolbars, command status bar and keyboard shortcuts.
- New ways of using the program interface, its settings and exporting the set profile.
- Configuration of the working screen: background colour, handles, cross hair size, cursor, etc.